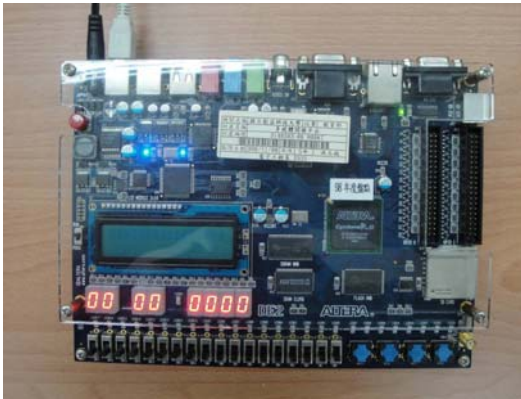


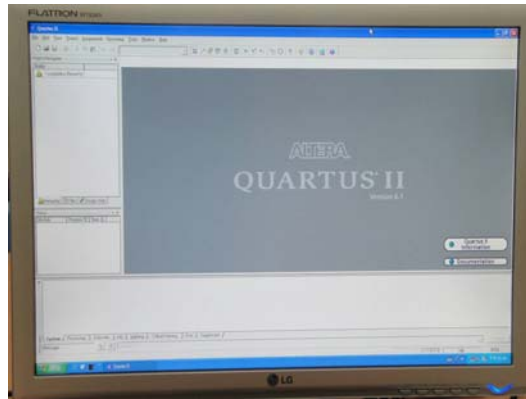
實驗室編號：E710

實驗室名稱：內嵌式系統晶片實驗室

實驗室重點設備如下：



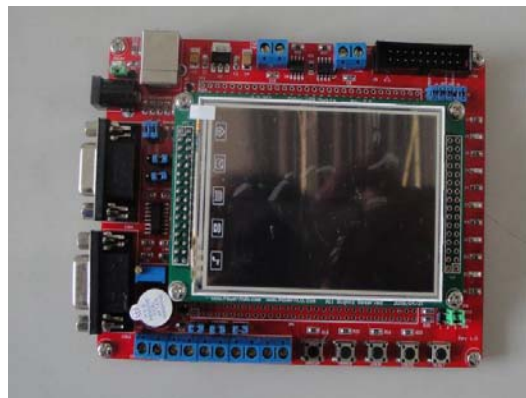
↑ SOPC 發展設備:ALTEA DE2 教育及開發板



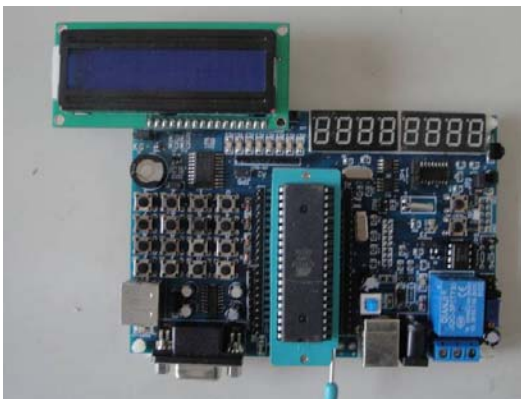
↑ ALTEA 贈與 FPGA 設計相關軟體



↑ ARM 9 CPU 開發板 (內載 LINUX )



↑ ARM CORTEX-M3 CPU 學習板



↑ 8051 學習板



↑ 個人電腦